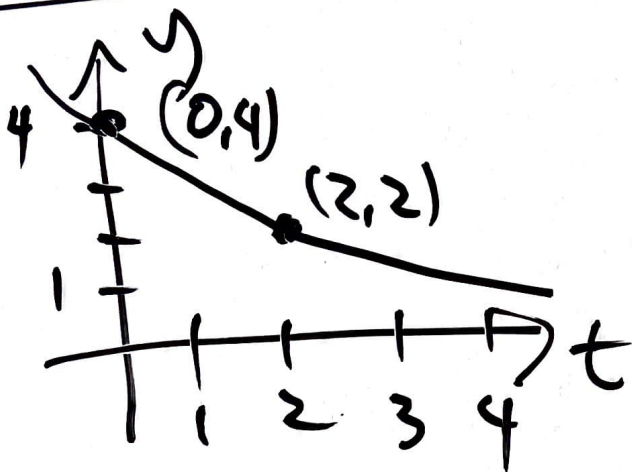


Find a formula
of the form

$$y = y_0 \cdot a^t$$

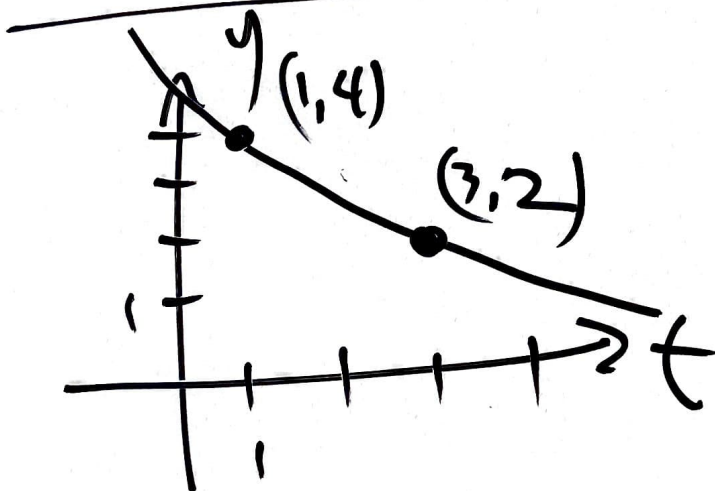
$$y = 4 \cdot \left(\frac{1}{2}\right)^t$$



Find a formula
of the form

$$y = y_0 \cdot a^{t/h}$$

$$y = 4 \cdot \left(\frac{1}{2}\right)^{t/2}$$



Find a formula
of the form

$$y = y_0 \cdot a^{(t-t_0)/h}$$

$$y = 4 \cdot \left(\frac{1}{2}\right)^{(t-1)/2}$$